

Town of Granville Agriculture and Farmland Protection Plan Executive Summary

The Town of Granville Agriculture and Farmland Protection Plan (The Ag Plan) is designed to serve as a ten to fifteen year long-range framework for sustaining and improving agriculture in the Town. The Plan articulates a vision, specific goals and a detailed toolbox of actions that Granville can put to work to realize that vision.

Agriculture plays a crucial role in the Town: 46% of the land is used for farming; millions of dollars are brought into the town from agricultural sales; farms contribute \$10.7 million to the total value of land in Town; and they support local businesses and create jobs; provide opportunities for tourism and recreation; contribute to the tax base without requiring a lot of services in return; provide locally grown food; are the core of the Town's open space; and are the major contributors to Granville's rural character.

The Ag Plan envisions Granville as a place where there will be land available to farm. It also envisions the Town as having a diversity of both prosperous agricultural operations and related businesses. These will be supported by local, County and State governments as well as area residents that understand and value the important role farming plays in the economic, cultural, and environmental character of Granville.

The Ag Plan's framework provides the citizens, government, organizations, and farmers with the guidance necessary to support future decisions about agricultural economic development, farmland protection, land use planning, and communicating and cooperating as all are part of the foundation for agricultural success. This Plan is not a regulatory tool, but is a toolbox of strategies and actions the Town could take over time to achieve its goals.

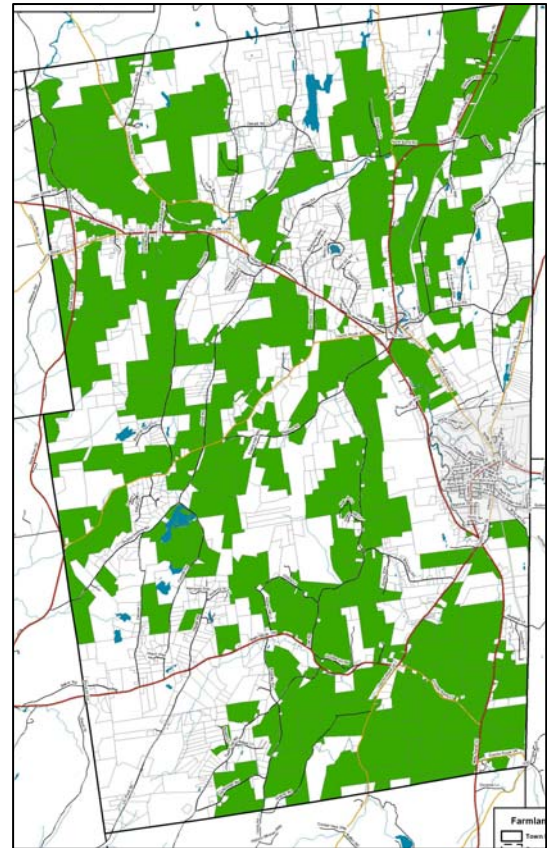
The Plan describes four mutually supportive, overarching goals. These goals are:

1. Initiate agricultural economic development programs.
2. Implement farmland protection strategies and farm-friendly land use policies to ensure that farmland remains available for farming activities.
3. Promote communication and cooperation between farmers, and among farmers, residents and regional, county, State and Federal agencies and organizations. Increase the understanding of area residents about the important role agriculture plays in Granville.
4. Advocate farmland protection and farm enhancement programs at the state and local level.

This Ag Plan was produced by citizens and representatives of the farming community as directed by the Town Board. The Ag Steering Committee drew on input from farmers, farmland owners, the public, and the experience and findings of the many excellent town, county, and regional experts and organizations involved with agriculture. It reflects an effort to faithfully integrate the concerns, ideas, and knowledge from all of these sources.

The plan's toolbox includes many different actions, but the overriding foundation of these tools includes:

- Formation of a Granville agricultural advisory committee to help the Town Board implement the Plan.
- Support County and local efforts that sustain farming such as Cornell Cooperative Extension, Soil and Water Conservation District, 4-H, FFA, and other programs.
- Collaborate with nearby towns and regional organizations to develop a farm and farmland marketing and promotion program that will serve to economically sustain existing and new farms.
- Consider developing and adopting a town-wide comprehensive plan, update existing subdivision regulations and the right to farm law, and consider developing a site plan review local law for non-farm commercial development projects.
- Develop and support education programs for residents and farmers to expand understanding of the role agriculture plays in Granville and to encourage development or expansion of niche, value-added, and other entrepreneurial farm operations here.
- Advocate that the State and County take actions to further support and promote farming.
- Monitor and report on the Plan's implementation each year to the Town Board, residents, and farmers to evaluate its progress.



Farmland in Granville, 2012